

ICM Unit 1 Quiz Review**Multiple Choice**

Identify the choice that best completes the statement or answers the question.

- _____ 1. Students at Panther Creek HS decide to determine the number of people with a Twitter account in the school. They survey the first 200 students walking in the building one day.
- | | |
|---------------|----------------|
| a. Random | d. Stratified |
| b. Systematic | e. Convenience |
| c. Cluster | |
- _____ 2. Athletes are grouped according to the sport they play and then a random sample is taken from each sport.
- | | |
|---------------|----------------|
| a. Random | d. Stratified |
| b. Systematic | e. Convenience |
| c. Cluster | |
- _____ 3. A student is going to be chosen to present his/her project first in class by selecting a name from a jar full of all the students' names in the class.
- | | |
|---------------|----------------|
| a. Random | d. Stratified |
| b. Systematic | e. Convenience |
| c. Cluster | |
- _____ 4. The NC Board of Education randomly selects 2 high schools from each NC county and checks their facilities for safety and accessibility.
- | | |
|---------------|----------------|
| a. Random | d. Stratified |
| b. Systematic | e. Convenience |
| c. Cluster | |

Short Answer

5. A police radar unit measured the speed of 25 cars on a certain street. The resulting speeds were:
29, 23, 30, 30, 27, 24, 30, 25, 23, 28, 25, 24, 28, 30, 23, 30, 27, 25, 29, 24, 23, 26, 30, 28, 25
- a) Construct a stem-and-leaf plot.
- b) Determine the average, median, and mode of the data.
- c) Determine the range, midrange, upper and lower quartiles, and IQR for the data.

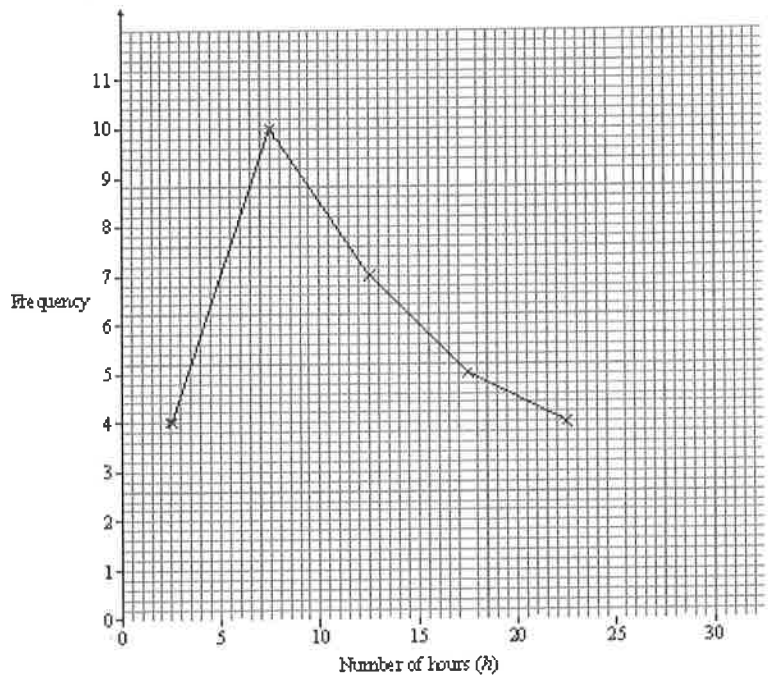
Name: _____

ID: A

6. The battery life of AA batteries is shown in the frequency distribution table below. What is the total number of batteries tested?

Battery life, minutes (x)	Frequency (f)
360–369	2
370–379	3
380–389	5
390–399	7
400–409	5
410–419	4
420–429	3
430–439	1

7. NUMBER OF HOURS OF TV WATCHED

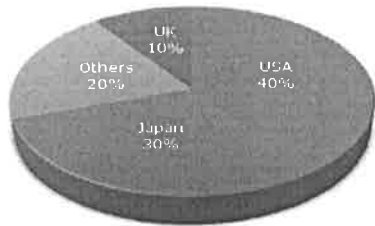


Using the frequency polygon above, determine

- The number of people who watch about 17.5 hours of tv per week.
- The total number of people surveyed.

Name: _____

ID: A



8.

The pie chart above shows the percentage of travelers from Brazil who traveled to the countries listed.

a) What percentage of Brazilian travelers went to either the USA or the UK?

b) If 1,000 travelers were surveyed, what number of tourists went to Japan or some other destination?